

# FACTSHEET





## The Pacaya Samiria National Reserve & the Peruvian Amazon Experience

If you find yourself in the Pacaya Samiria National Reserve, you're doing something right. The blooming soul of the northern Amazon Rainforest is among the most protected biodiversity swaths remaining today in the region, and no other destinations in Peru offer the kind of unbarred access to some of Earth's most elusive creatures and plants.

Just imagine going on a morning boat ride skirting the edges of the river in search of cackling macaws and tree sloths slowly waking up to begin their days, then returning to your vessel with a chilled local fruit juice waiting for you. Or, how about swimming in a mirror-like lagoon that is so calm that it seems preface to a storm, yet instead, you're greeted by rare pink river dolphins jumping up to say "hello," then your guide offers you a warm towel after your dip? Finally, what better way is there to close out your evening fishing for red-bellied piranhas during a fiery sunset than with a 3-course, individually-crafted gourmet meal made of ingredients sourced from the natural backyard that surrounds you?

These and much more are the kinds of details that have been anticipated by the exceptional crew of the Delfin III, whose operations have been painstakingly considered to cater to even the most discerning and seasoned explorers who seek styled, boutique experiences along with authenticity and charm.

The Delfin III thrive in splendid harmony with nature and its spectacular surroundings. By any standards, our guests appreciate the "noncruise" atmosphere and the sense that you are on board to explore one of the world's most intriguing and authentic environments.

The true detail that set Delfin apart from others is its dedication to collaborating the rich rainforest ecosystem with its own identity, which permeate through every aspect of the vessels and operations. Collected irapay leaves (typically seen on residential huts) form the boats' waterproof roofs, lamps made from spare paiche fish scales highlight common areas, quality woods from the forest form the very boat and Suites, and custom-made repellants and lotions made of natural jungle ingredients serve every guest.

When lazy afternoons roll around or if you want to gaze at the millions of southern stars set against the blackest of skies, venture to the top deck where soothing lounge space and a bar will lull you into pure relaxation.

### Seasons:

**Low water season:** June to October.  
Ideal for travelers that prefer to walk through the rainforest to discover its flora and fauna. Allows for more trail walks.

**High water season:** November to May.  
Ideal for travelers that prefer to duck into otherwise isolated corners of the reserve onboard speed boats. Allows for more extensive exploration and access via water.

# DELFIN I



## Delfin I inclusions:

- Private terrace.
- Air conditioning.
- All-natural toiletries.
- Nightly turndown service.
- In-room electronic safe.
- Individual climate control.
- Purified water replenished daily.
- Under-bed storage.
- Hair dryer and makeup mirror.
- Yoga Mat, Binoculars, Mini Fridge.
- Multi-configuration plugs 110v/220v (does not fit European plugs).
- Iron and ironing board.
- Roof-to-floor paneled windows provide unobstructed views of the ever-changing river conditions.

*\*Children aged 7-11 are eligible for a 20% discount from the adult rate.*

## CAPACITY

8 passengers (*up to 12 with full triple accommodations*).

- 2 Master Suites
- 2 Deluxe Master Suites  
*with cool water whirlpool.*

## FACILITIES

Dining area with single table so everyone can share the dining experience (option available to have private in-room dining). Outdoor top deck lounge area with stocked bar.



**Deluxe Suite (2):**

34 meters<sup>2</sup> (360 feet<sup>2</sup>) with a cool water found on the private terrace (32 meters<sup>2</sup> (320 feet<sup>2</sup>)).

*\*Triples available with base in a futon bed, for adults or children*



**Master Suite (2):**

32 meters<sup>2</sup> (340 feet<sup>2</sup>) with furnished private terrace (30 meters<sup>2</sup> (320 feet<sup>2</sup>)).





Outdoor Lounge



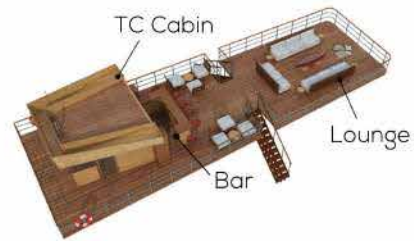
Dining Room



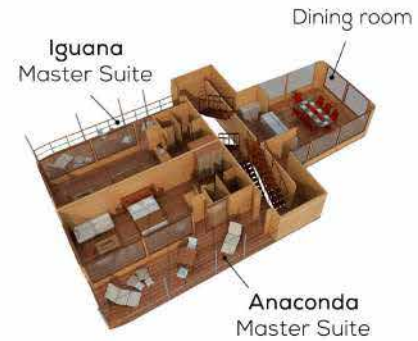
Bar



## Deck Plan



TOP OBSERVATION DECK



UPPER DECK



MAIN DECK

## Technical Information

Latest update: Refurbished in 2010

Type of vessel: River vessel

Port of Embarkation: City of Nauta

Vessel's Registry: Peru

Length: 75 feet

Beam: 39 feet

Draft: 5'8"

Capacity: Up to 12 passengers with full triple accommodations

Generator: Caterpillars 55 KW (encapsulated)

Motor: Cummins 330HP

Cruising Speed: Average 8 knots

Water: Water treatment plant with 5.0 cubic meter capacity

Sewage Waters: 2.5 cubic meter septic tank

Radio Communication: HF, VF and satellite phone on board

Launch Boats: 2 aluminum 10 passenger skiffs (equipped with Mercury 60HP engines), radio communication with main vessel and life jackets

Life Jackets: One per passenger, available in every suite

# DELFIN II



## Delfin II inclusions:

- Air conditioning.
- All-natural toiletries.
- Nightly turndown service.
- In-room electronic safe.
- Individual climate control.
- Purified water replenished daily.
- Under-bed storage.
- Hair dryer and makeup mirror.
- Mini fridge (Master Suites only).

- Multi-configuration plugs 110v/220v (does not fit European plugs).
- Indoor sitting area.
- Roof-to-floor paneled windows provide unobstructed views of the ever-changing river conditions and the

*\*Children aged 7-11 are eligible for a 20% discount from the adult rate.*

## CAPACITY

28 - 30 passengers

10 Suites

4 Master Suites

*(with 90-degree wrap windows)*

## FACILITIES

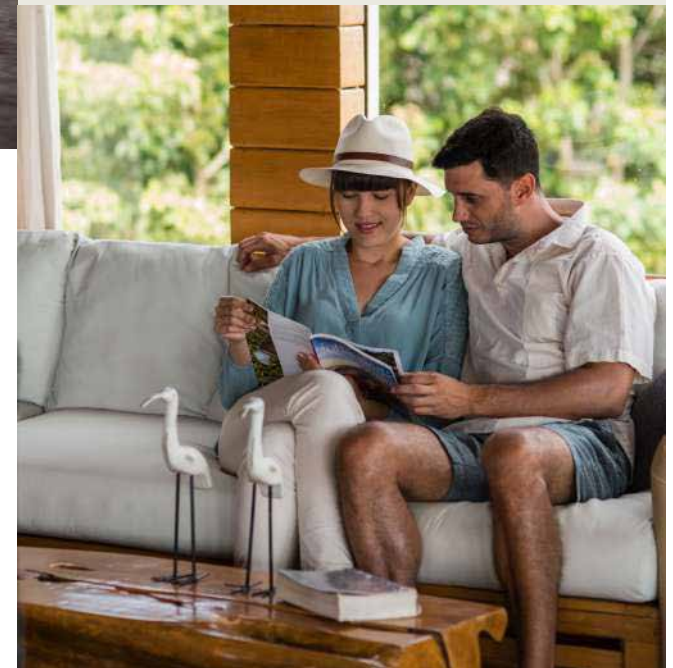
Dining room for up to 32 passengers

Outdoor top deck area with stocked bar

Indoor lecture room & lounge

Massage room

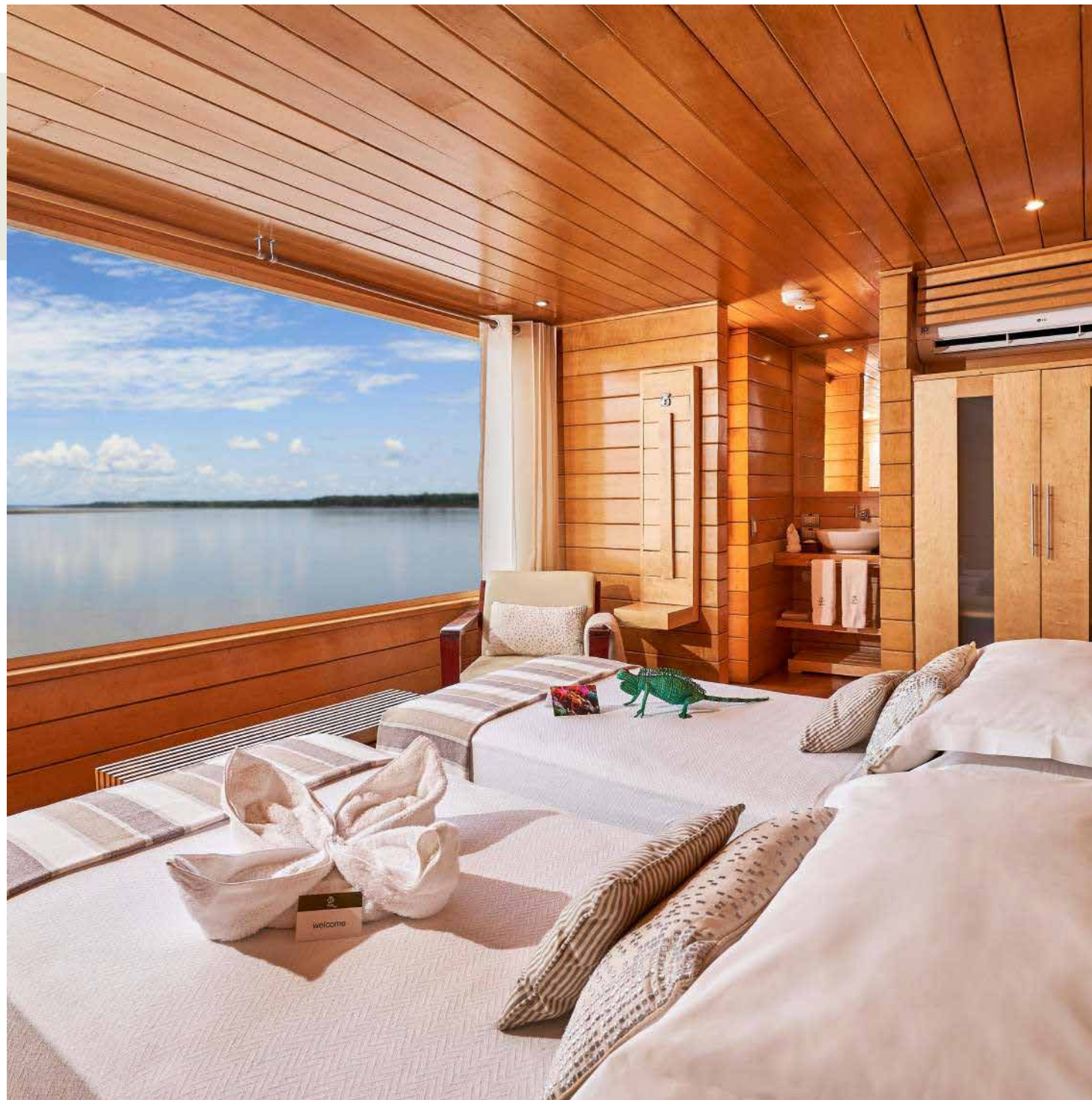
Exercise room





**Suites (10):**

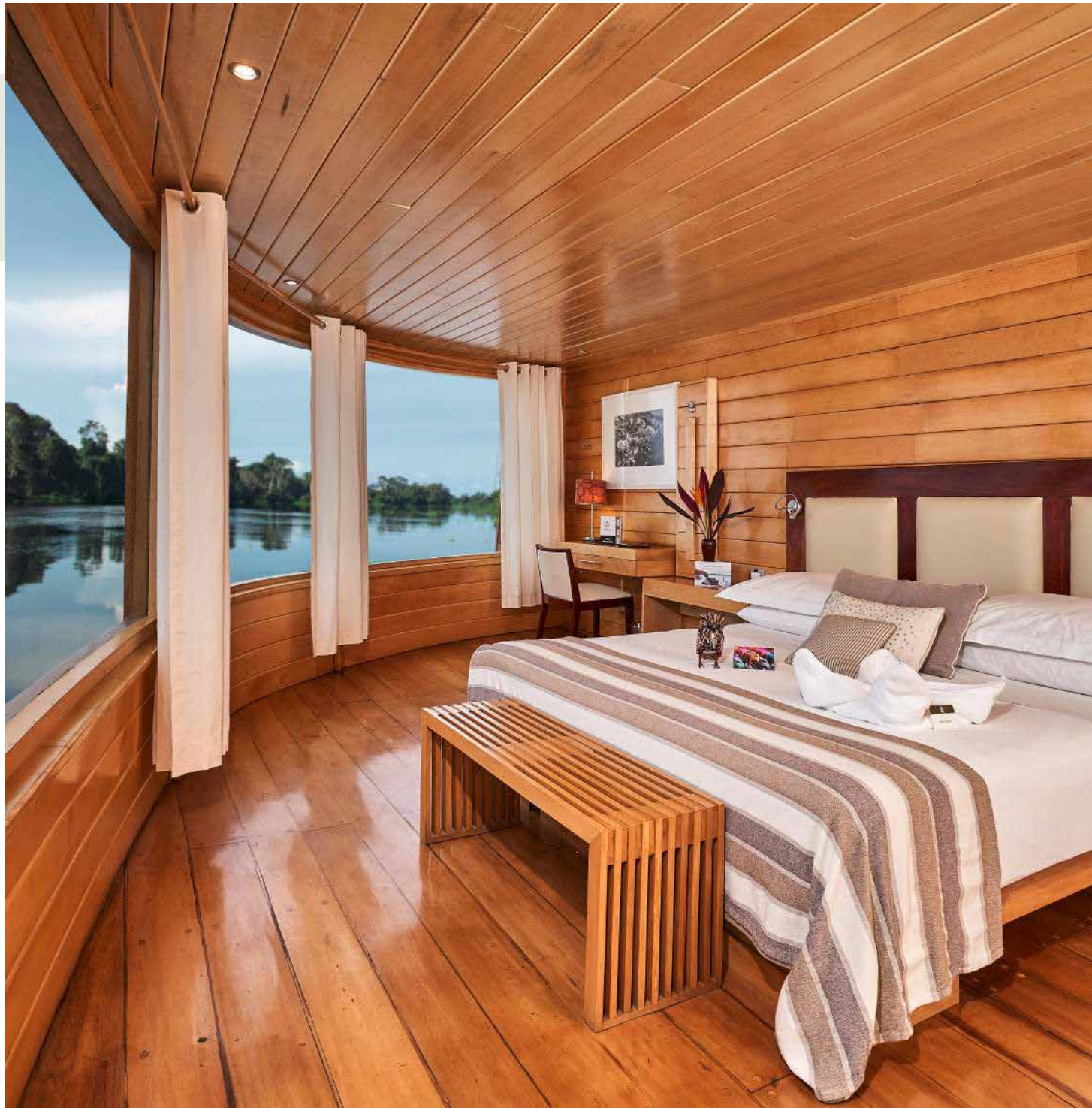
19.5 meters<sup>2</sup> (210 feet<sup>2</sup>).



**Master Suites (4):**

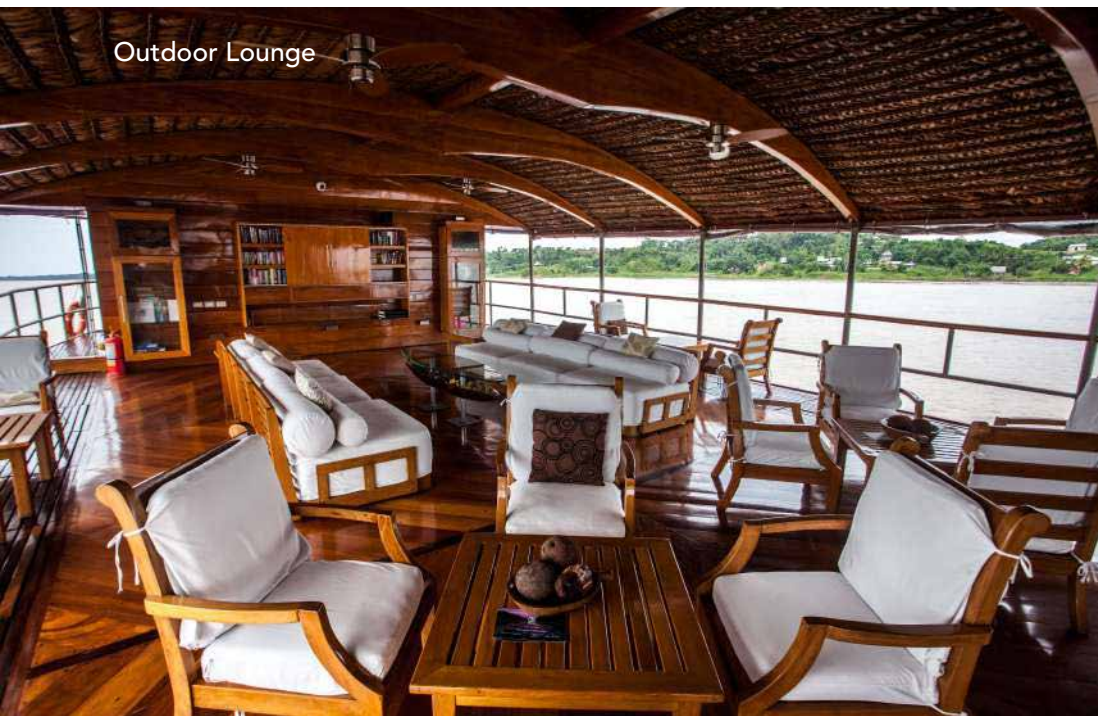
21 meters<sup>2</sup> (230 feet<sup>2</sup>) with  
90-degree front-facing windows.

*\*Triples available with base in a rollaway bed, for children  
aged 7 - 11 or under only in two of the Suites*





Dining Room



Outdoor Lounge



Indoor Lounge

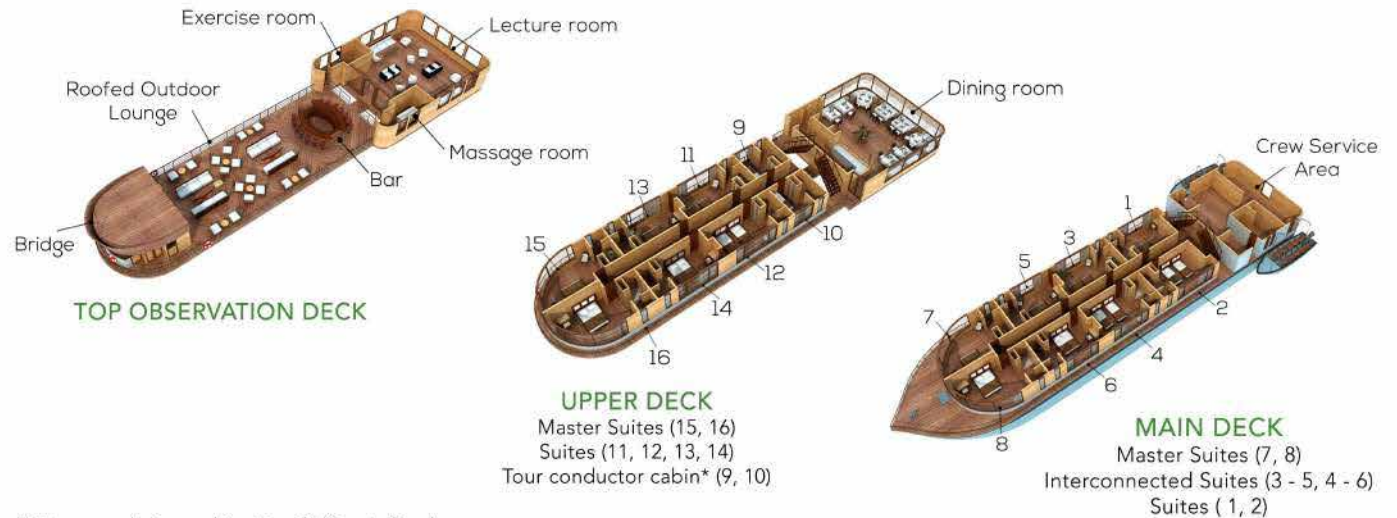
Exercise Room



Massage Room



## Deck Plan



\* Tour conductor cabin: For Delfin staff only.

## Technical Information

Latest update: 2009  
 Type of vessel: River vessel  
 Port of Embarkation: City of Nauta  
 Vessel's Registry: Peru  
 Length: 133 feet  
 Beam: 32 feet  
 Draft: 8 feet  
 Capacity: Up to 30 passengers  
 Generator: 2 Caterpillars 89 KW (encapsulated)  
 Motor: Caterpillar 454 HP  
 Cruising Speed: 9 knots

Water: Water treatment plant with 7.0 cubic meter capacity  
 Sewage Waters: Sewage treatment plant 2.5m<sup>3</sup>  
 Radio Communication: HF, VHF and satellite phone on board  
 Launch Boats: 3 aluminum 12 passenger skiffs equipped with four stroke low emission Mercury 60HP engines + radio communications with main vessel and life jackets  
 Life Jackets: One per passenger, available in every suite

# DELFIN III



## CAPACITY

Up to 44 passengers

- 1 Owner's Suite
- 2 Corner Suites
- 10 Upper Suites
- 9 Suites

## FACILITIES

Indoor and outdoor top deck lounges.  
Pool  
Full bar  
Massage room & exercise room.  
Boutique

## Delfin III inclusions:

- Air conditioning.
  - All-natural toiletries.
  - Nightly turndown service.
  - In-room electronic safe.
  - Individual climate control.
  - Purified water replenished daily.
  - Under-bed storage.
  - Hair dryer and makeup mirror.
  - Multi-configuration plugs 110v/220v (does not fit European plugs).
  - Iron and ironing board.
  - Mini fridge (Owner's Suite & Corner Suites only).
- \*Children aged 7-11 are eligible for a 20% discount from the adult rate.*



**Owner's Suite (1):**

55.55 meters<sup>2</sup> (597.40 feet<sup>2</sup>)



**Corner Suite (2):**

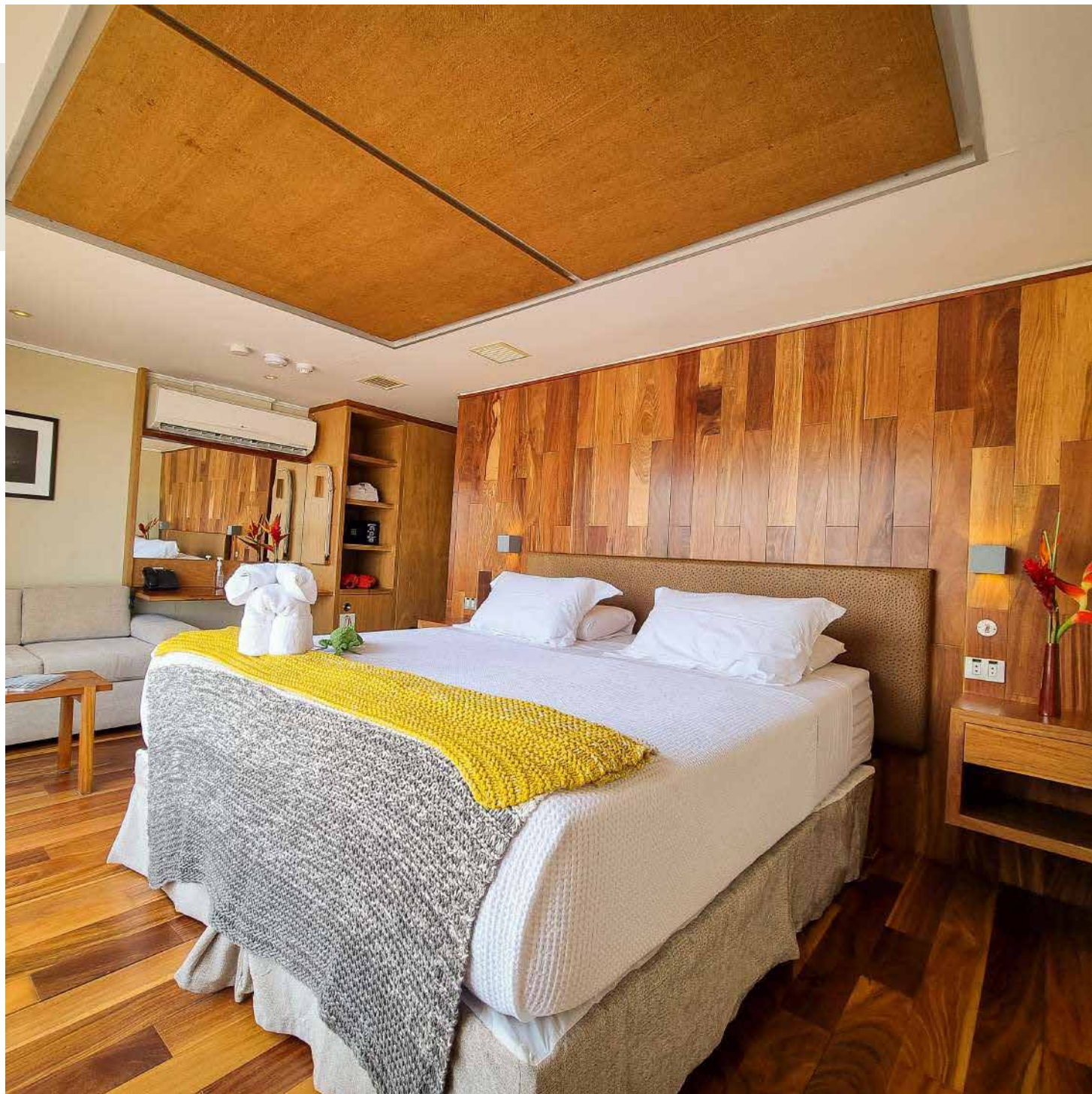
25 meters<sup>2</sup> (269.098 feet<sup>2</sup>)





**Upper Suites (10):**  
22 meters<sup>2</sup> (236.81 feet<sup>2</sup>)

**Suites (9):**  
22 meters<sup>2</sup> (236.81 feet<sup>2</sup>)





Dining Room



Massage Room



Sun Deck

Lounge



Bar



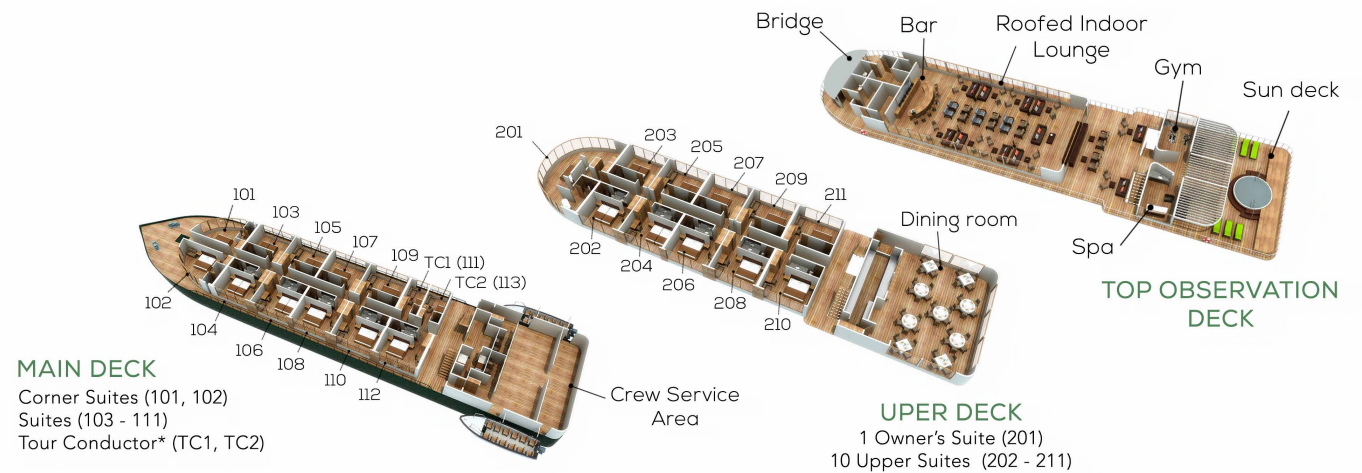
Exercise Room



Boutique



## Deck Plan



\* Tour conductor cabin: For Delfin staff only.

## Technical Information

Launched: 2015  
Type of vessel: River vessel  
Port of Embarkation: City of Nauta  
Vessel's Registry: Peru  
Length: 184 feet  
Beam: 39 feet  
Draft: 8.5 feet  
Capacity: Up to 44 passengers  
Generator: 2 Caterpillars 140KW each  
Motor: 2 Caterpillars 454HP each  
Cruising Speed: Average 10 knots

**Water:** Water treatment plant with 4 tanks (1,100 liters each one)  
**Sewage Waters:** Sewage treatment plant PTAR with 2 tanks  
**Radio Communication:** HF, VF and satellite phone on board  
**Launch Boats:** 3 aluminum 16 passenger skiffs equipped with four stroke low emission Mercury 60HP engines + radio communications with main vessel and life jackets  
**Life Jackets:** One perpassenger, available in every suite.



## Dining & Drinking

Thanks to the cultural diversity of our country, Peruvian gastronomy has become one of the most craved-after kitchens on the continent and the world. Because of this, Delfin, apart from being dedicated to bringing you the adventurous Amazonian spirit into your life, is proud to have the opportunity to present you with a full menu of foods and beverages prepared in utmost style, quality, and originality.

We hope you enjoy the creativity of our specialized kitchen and its crew who work hard to present you with balanced and exquisite menus every day. Our innovative chef will surprise you with the most exotic culinary delights, always freshly prepared in the school of Peruvian gourmet gastronomy infused with touches and inspirations from the rainforest around you.

We are happy to accommodate any special diets and restrictions with timely prior notice.

The dress code is casual for all excursions and meals.

### Meals included

Arrival day: dinner  
Cruise days: all meals  
Departure day: breakfast

### Beverages included

Natural juices  
Soda  
Coffee & tea  
Water  
Local beer  
Pisco based cocktails  
House wines at lunch & dinner





## Itineraries

All of our itineraries have been carefully crafted to showcase the best flora and fauna that the Marañon and Ucayali Rivers in the Pacaya Samiria National Reserve have to boast, along with offering ideal soft adventure excursions for travelers to further discover the secrets of the Peruvian Amazonia.

Itineraries vary based on whether the travel dates fall in the high water/rainy season or low water/dry season.

All activities are optional, although we encourage all guests to tempt their adventurous side. 2-3 times daily excursions (one in the morning, one in the afternoon) may include but are not limited to kayaking in the calm creeks and lakes, fishing for piranhas at sunset, skirting the riverbanks in search of playful creatures, birdwatching and trail walks. Optional early birdwatching excursions before breakfast are also available for those who are up for the challenge!

*For day-to-day itineraries, please consult your trip advisor.*

**Tailor-Made Charters:** These allow us to personalize your Amazon voyage. In addition to our regular itineraries, we can create a unique, fully custom-designed program just for you and your loved ones. Bird watching, professional fishing, and deep exploration of jungle trails are just some examples of specialized daily excursions we can arrange for your specific group's interests, skills, and sense of adventure.

### Departure days

**DELFIN I - 3 Nights program:** Mondays - Thursdays  
**4 nights program:** Thursdays - Mondays

**DELFIN II - 3 Nights program:** Sundays - Wednesdays  
**4 nights program:** Wednesdays - Sundays

**DELFIN III - 3 Nights program:** Saturdays - Tuesdays  
**4 nights program:** Tuesdays - Saturdays

## Sustainable Travel

Delfin has made it a highest priority to give back to the Amazon's communities as much as the local people have enriched their travelers' experiences.

Handmade, custom-designed artisanal wares made by the village women vibrantly enhance every Suite and dining room on board, and often the community men with lightning-fast reflexes accompany trail walks to make sure you don't miss fast-moving poison dart frogs or slithering anacondas! During the course of our cruises, we used to visit several of these small towns, due to the pandemic and for protection of the communities we are not visiting them anymore. You can collaborate buying the variety of beautiful palm fiber crafts, wood, and seeds that we are sure will attract your eyes.



## Crew & Guides

We have assembled a talented and experienced team of naturalist and interpretive Amazon River guides who are the most important and essential ingredient in our cruises. Their expert knowledge of plants and birdlife, and the history of this part of the Amazon, will be the difference between a visit to Peru and an unforgettable life experience in the jungle. Put together, they have decades of invaluable experience.

Most of our guides were born and raised in the rainforest they now call their office, in small communities that are spread throughout the Peruvian Amazon. They spent their childhoods walking the forest paths, climbing trees to pick fruit, fishing the small streams, and chasing iguanas along the shoreline. Now, they are proud to share their knowledge and passion with our travelers from around the world.

Many of them have also participated in training sessions and projects with Peruvian and North American professors,

researchers, scientists, and other professionals of similar leagues. All our guides are bilingual in Spanish and English, and some have additional language aptitudes. You will also discover during a cruise that they have delightful musical talents to boast!

Delfin I
12 total crew members 1 expert naturalist guide
Delfin II
28 total crew members 3 expert naturalist guide
Delfin III
29 total crew members 3 expert naturalist guide